

JKß-JOY KROEGER BECKNER-JKß

classical Realism, from hounds to humans & more!

News & Journeys of Joy! Vol. 20, Number 4, Summer Sale 2025

Welcome to my Retirement Sale!

80 years and counting... ;-))

*Think Anniversaries, Birthdays &
Holidays!*

40% Off life-size bronzes

*Dachshunds, Goldens, a Gordon Setter
& an Akita*

1:6 Scale bronzes are at last price sold.

Please click below to learn about the process of
creating a bronze sculpture:

<https://joybeckner.com/clay-to-collector/>



"A Good Life" SS, 6/20 - \$8800, now \$5280



"Siesta" SS, 5/20 - \$5300, now \$3180



*"So Good to See You, Too" SS, 2/9 - \$8900, now
\$5340*

SS is Standard Smooth.

SL is Standard Long

MW is Miniature Wire - Life-size

ML is Miniature Long - Life-size



"So Good to See You, Too" SL, 2/5

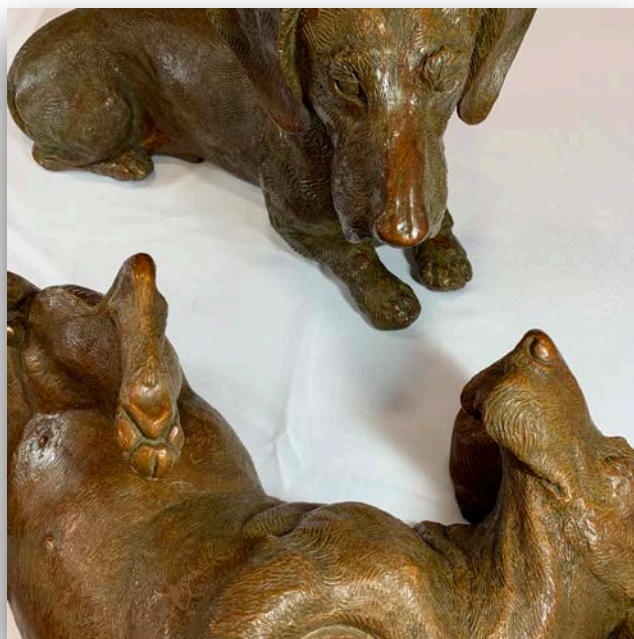
Shown in clay, this IS cast in Bronze.

\$8900, now \$5340



"So Good to See You" ML, 5/10

\$7650, now \$4590



"Lusty" is "Lord" & "A Good Life" MW!

Thank you, Nola Patient for this title!

"Lusty" is shown above.



"Lord of the couch" MW, 8/20

\$3600, now \$2160



"A Good Life" MW, 4/5

\$7600, now \$4560



"Miss Me" MS, 8/20

\$6500, now \$3900



"Gentle Cloud" AP2/2

Half Life-size Akita

\$5500, now \$3300



"Big Heart" 8/20

Half Life-size Gordon Setter

\$6000, now \$3600



"Over the Rainbow" 4/20

8 month old life-size Golden Retriever

\$2300, now \$1380



"Three Faces of Guinevere" 4/20

A growing Golden Retriever puppy.

\$6500, now \$3900



"Merry Sunshine"

Half Life-size, 1/9

\$8000, now \$4800



"Merry Sunshine"

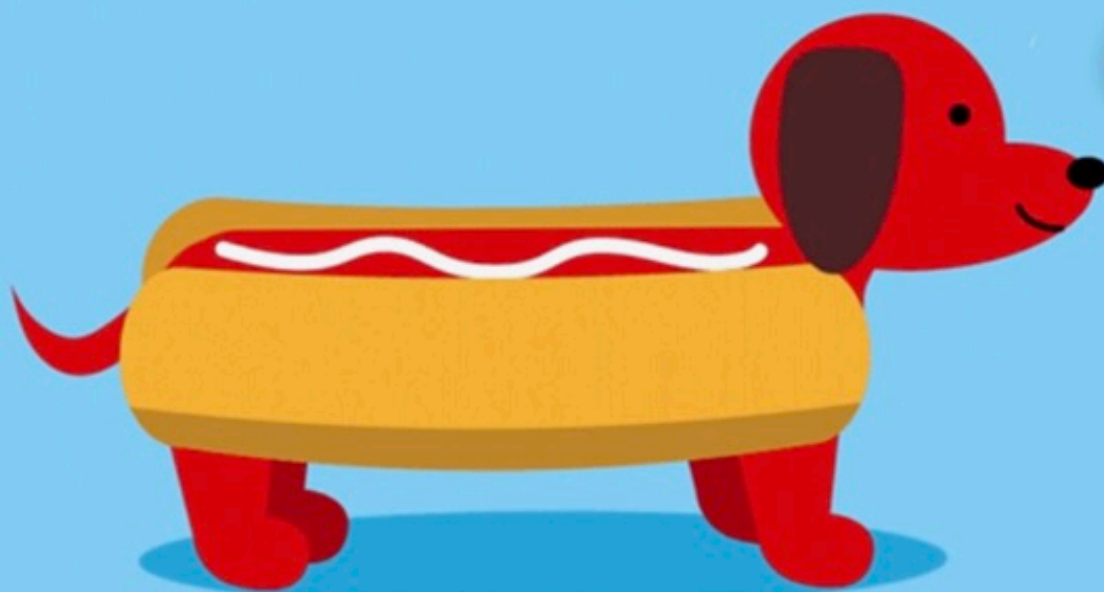
Quarter life-size, 6/50

\$3000, now \$1800

Gold & Silver Jewelry is on sale, too!

<https://joybeckner.com/gold-silver/>

*Please think Holidays,
Anniversaries & Birthdays!*



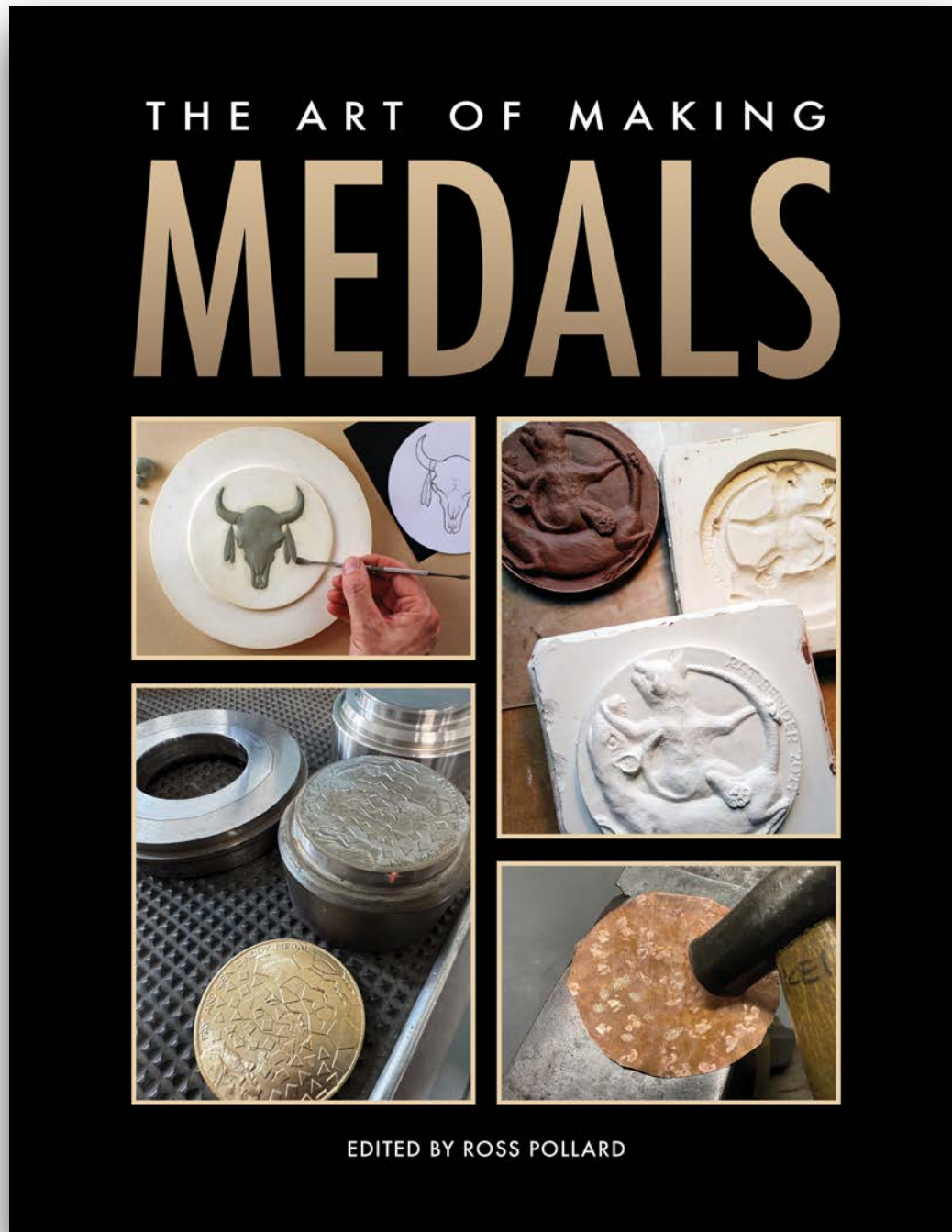
**HAPPY BIRTHDAY,
AMERICA**



"The King of Snooze"

July 6, 2025: Coltz is named "The King of Snooze" by his breeder, Dr. Randy Eltringham. Coltz definitely is the King of our couch!!!

July 7, 2025: WOW! Today Amazon delivers my book, “The Art of Making Medals” edited by Ross Pollard, in which two pages feature my work! It’s “My chapter” according to Ross!



INSPIRATION

BY JOY BECKNER

Inspiration was inspired by my smooth coat dachshunds and the exquisite bas-relief medals modeled by German sculptor Heide Dobberkau (1929 – 2021). Years ago, I fell in love Heidi's style and acquired several of her medals.

I modeled *Inspiration* in wax at actual size and then had it cast in bronze and pewter. I designed the pewter medal in such a way that it could also be used as a dog show award or as an ornamental wall hanging. The original bronze version of *Inspiration* was juried into the FIDEM XXXI Medal Congress and Exhibition at the Tampere Museum in Tampere, Finland.

The wax model

I sculpted *Inspiration* directly in red wax (1) using modeling techniques that I learned from Eugene Daub. Eugene is a renowned American sculptor and a distinguished member of the American Medallic Sculpture Association. I attended one of his bas-relief workshops after completing my first commission – a series of reliefs for the National Cosmetology Association.

Because I loved the oval shape and thinness of Heidi Dobberkau's medals, I decided to recreate these dimensions in my medal as closely as possible. Naturally, I used very small tools and an Opti-Visor to see what I was sculpting. As a finishing touch, I signed and dated the model and included my mark JKB. I then added a wax sprue (2).

Molding and casting

Molding and casting of the medal was done with assistance from Ben Cordsen in Fort Collins, Colorado. To make a mold of *Inspiration*, Ben first placed the model in a small plywood molding box. He then filled the box with liquid rubber (3). After the rubber cured, he disassembled the box and used a sharp knife to carefully open the mold and extract my wax original (4).

Next, Ben used the mold to cast copies of my design in white resin (5). Ben trimmed the flashing around the seam of each cast and then used them to make a vulcanized rubber spin-casting mold (6). Spin casting is a technique that utilizes centrifugal force for making decorative pewter objects like medals, figurines, and belt buckles. Compared to lost wax casting, it is quite cost effective.

Using a centrifugal casting machine is fairly straightforward. First, a disk-shaped mold is secured on a rotating platform inside the machine. The machine's lid is then closed and the mold spun at high speed. While



Inspiration by Joy Beckner. Above: Spin-cast pewter, 89 x 55 mm, 2009. Below: Original cast bronze version of the medal.

it is spinning, molten pewter is ladled into an opening at the top of the unit (7) which feeds into a central sprue in the mold linked to the mold cavities via smaller channels. The force generated during the process pushes the metal into every nook and cranny of the designs. After a few minutes of spinning, the mold is removed from the machine and opened to reveal a set of flawless castings (8).

Final steps

After the castings cool, they are lifted from the mold and are separated from the central sprue (9). Each medal is then buffed and polished to a shiny finish (10). The final product (11) features a ribbon that allows it to be used as a dog show award.



1



2



3



4



5



6



7



8



9



10



11

1) Original wax model. 2) Model with sprue attached. 3) Pouring a rubber mold of the model. 4) Opening the mold with a hobby knife. 5) Resin cast, fresh from the mold. 6) Preparing a rubber spin-casting mold using five resin duplicates of the model. 7) Pouring pewter into the spin casting machine. 8) Opening the mold to reveal the pewter castings. 9) Separating the cast medals from the sprue. 10) Buffing a medal. 11) The finished product.

Order your book from Amazon.
Amazon's price is right and shipping is FAST!
"The Art of Making Medals"
edited by Ross Pollard

HOT SURFACES FOR PETS

| AIR | GRASS | CONCRETE | ASPHALT |
|------|-------|----------|---------|
| 85° | 88° | 105° | 130° |
| 90° | 99° | 120° | 140° |
| 95° | 105° | 134° | 150° |
| 100° | 114° | 145° | 160° |



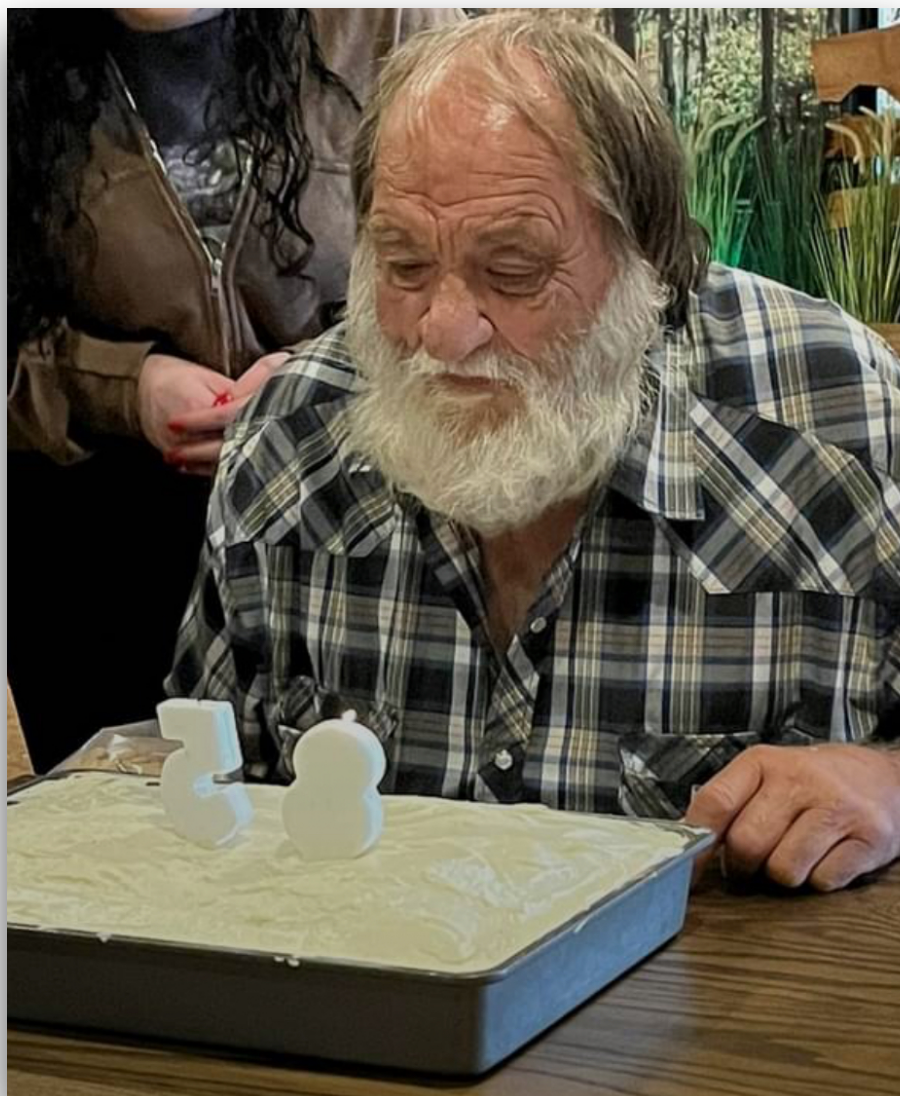
July 9, 2025: Brian surprises me with a trip to Ted Drewes, the BEST place in St. Louis to get the BEST frozen custard!



We each get a Hawaiian Concrete with pineapple, banana, and macadamia nuts with the glorious Vanilla custard. Brian thinks it also has a bit of honey. YUM!!! Ted Drewes has been in business since 1929!



Next we visit Chocolate, Chocolate, Chocolate, aka Bissinger's, and get some "Factory Seconds" that are not quite as pretty as their perfect ones.



July 13, 2025: My cousin Donnie is 85 today! I would like to see him. It's probably been 30 years since we last talked.

One Last thing...

Wax weight is EVERYTHING!!!

July 14, 2025

Last Fall, a longtime collector asked me to have another cast made of a portrait she had commissioned another sculptor to make of her now long gone husband. She wants this cast for her son. She provided a good mold to use.

The wax was poured locally. It was HEAVY. We drove it to be cast in Lawrence, Kansas. A local man metal finished the portrait and patinated it. WOW! Does it ever weigh a lot!!!

My canine bronzes would be much more expensive if I had them cast with these local folks versus my folks in Colorado. The wax was incredibly heavy and now the metal is incredibly heavy!

34 Pounds!

*Thank you very much for your
time and your interest in my work.*

Please Think Holidays!

I look forward to hearing from you.

stay safe & healthy ...

Sincerely,

Joy

314-378-7032
info@joybeckner.com

